

The Apollo Family of Piston Pumps

ELEGANTLY SIMPLE

The Apollo brand of solar and electric piston pumps continues to expand, because they work.

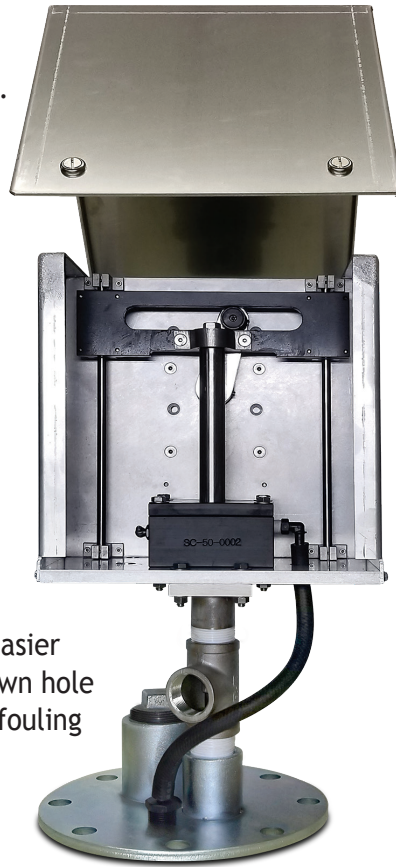
Elegantly simple, Apollo represents the joint evolution of two basic technologies -- the linear-rod, Scotch-yoke driver and the miniaturized oilfield pump-jack down hole.

Apollo's pump anything that flows, regardless of viscosity or chemical composition, with the strength and stamina required for applications as diverse as landfill leachate, gas-well dewatering, hydrocarbon remediation and biofuel sump.

Powered either by solar panels or AC grid electricity, the rugged and reliable driver is mounted above the well or sump for safer, easier installation and servicing. The piston-pump down hole pumps at any angle, resists encrustation & biofouling and is indifferent to vacuum.

Versatile, portable and adaptable to site requirements, the Apollo is also lower-priced than comparable pump types.

Apollo is unique in the industry. See how decades of field-partnership innovation can work for you.



**ELECTRIC MODELS
CAN BE MODIFIED
FOR HAZARDOUS DUTY**

Why Apollo?

- Pumps anything flowable
- Above-grade mounting
- Lower operational costs
- Few moving parts
- Less-frequent maintenance
- Safer, easier servicing
- Lower power requirements
- Versatile
- Portable

MODEL	APOLLO SOLAR 101
TDH	To 400 ft. / 122 m.
Flow Range	To 1.1 gpm / 4.2 lpm 1,584 gpd / 5,996 lpd
MODEL	APOLLO SOLAR 102
TDH	To 175 ft. / 53 m.
Flow Range	To 2.7 gpm / 10.2 lpm 3,888 gpd / 14,717 lpd
MODEL	APOLLO SOLAR 103
TDH	To 70 ft. / 21 m.
Flow Range	To 6.5 gpm / 24.6 lpm 9,360 gpd / 35,431 lpd
MODEL	Apollo-AC Electric 101
TDH	400 ft. / 122 m.
Flow Range	To 1.1 gpm / 4.2 lpm 1,584 gpd / 5,996 lpd
MODEL	Apollo-AC Electric 102
TDH	To 175 ft. / 53 m.
Flow Range	To 2.7 gpm / 10.2 lpm 3,888 gpd / 14,717 lpd

*Solar or
AC Power*

