

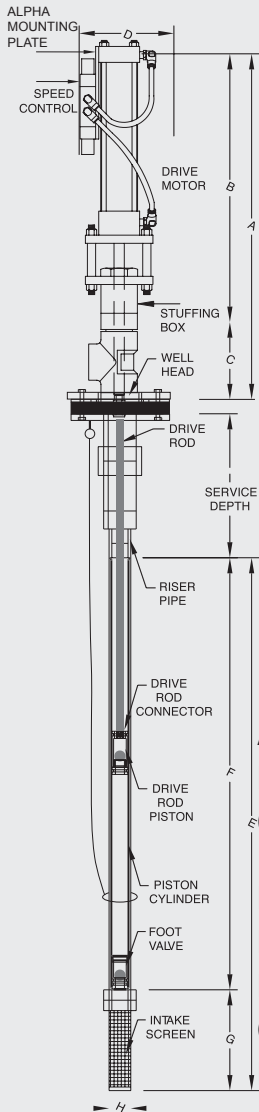
Atlas 2.5 Pneumatic Piston Pump®

TECHNICAL SPECS.

- Operational depth:
Up to 813 ft.; 248 m.
- Flow range:
Up to 2.0 US gpm; 7.6 lpm
- Well casing size:
2 in. (5.08 cm) or greater

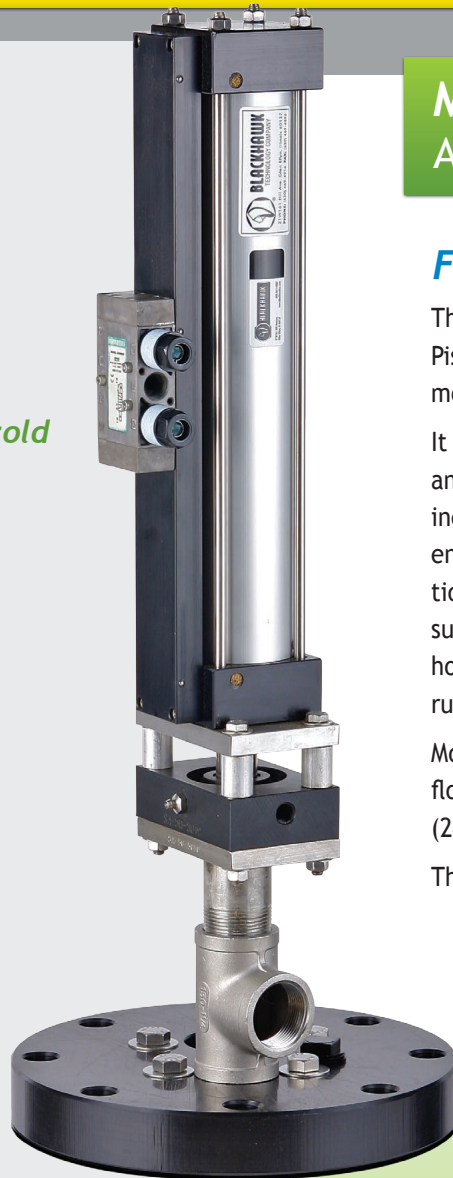
Best for heavy-duty applications, harsh environments, extreme cold

PUMP DIMENSIONS



DIMENSIONS (IN INCHES)

- A.** Above Well Height41.0
- B.** Driver Width36.0
- C.** Discharge Tee and Well Seal Height..... 5.0
- D.** Driver Diameter 5.5
- E.** Foot Valve Assembly35.0
- F.** Foot Valve Length30.0
- G.** Intake Screen Length 5.0
- H.** Largest Downhole Diameter 1.9



MODEL 101: POWERFUL ABOVE-WELL-DRIVE PUMP

For Challenging Situations

The Atlas 2.5 Pneumatic Piston Pump® is Blackhawk's most powerful pneumatic.

It is designed for difficult and heavy-duty applications, including hot and/or harsh environments, remediation, high discharge pressure, deep wells, angled or horizontal pumping, winter running and extended duty.

Model 101 maintains steady flow to depths of 813 feet (248 meters).

The Atlas 2.5 Model 101 is a

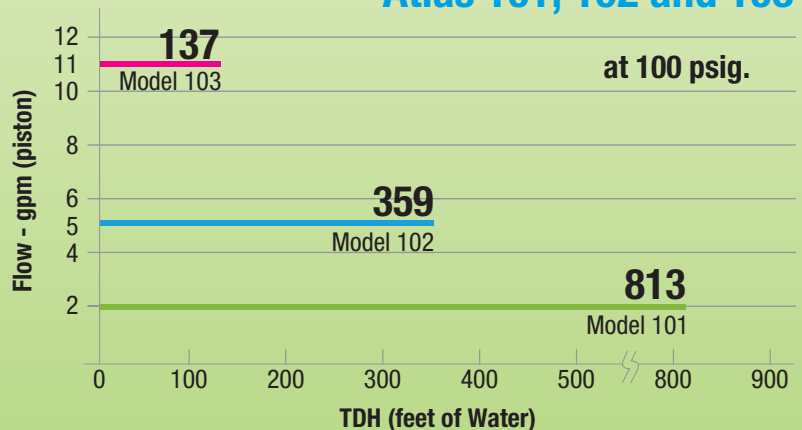
reciprocating rod, positive-action piston pump powered by industrial-quality compressed air.

The motor is at surface grade above the wellhead for easy installation and maintenance.

Power to the pump is direct from surface through the sucker-rod assembly.

The fluid inlet is at the pump bottom intake and removes fluid to 0 submergence depth.

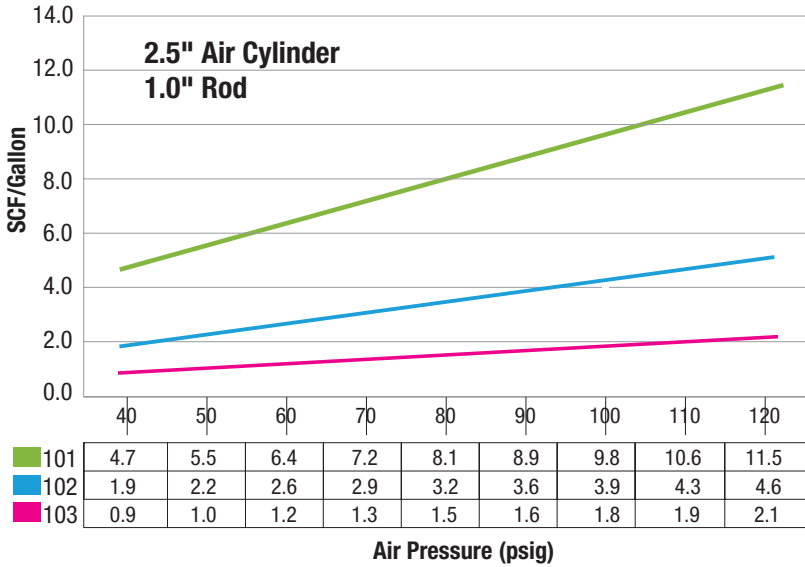
FLOW vs. DEPTH Atlas 101, 102 and 103



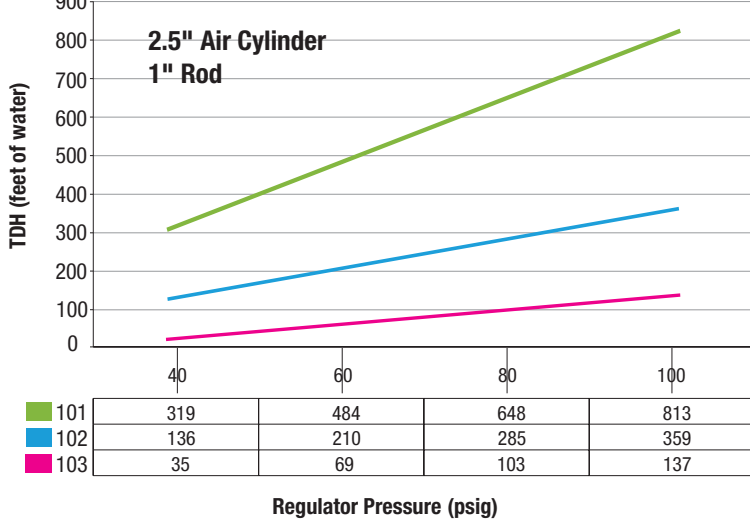
Atlas 2.5 Pneumatic Piston Pump®

MODEL 101: ABOVE-WELL POSITIVE-ACTION DRIVE MOTOR

SCF x Regulator Pressure



Depth x Regulator Pressure



Performance Data

Operating Depth	813 ft. / 248 m
Flow Range	Up to 2.0 US gpm / 7.6 lpm 2,880 US gpd / 10,900 lpd
Max. Operating Pressures	352 psig (based on 100 psi air supply)
Maximum Lift	813 feet of water
Strokes per Minute	5 - 40
Max. Strokes per Minute	40
(variable speed control adjusts to well conditions; liquid drawn down to top of screen)	
Temperature Range	To 140° F / 60° C

Technical Data

Max. External Diameter	1.9 in. (4.83 cm)
Total Cylinder Length	38 in. (96.5 cm)
Connection To Riser Pipe	1.25 in. (3.18 cm)
Recommended Internal Bore-Hole Diameter	2 to 3 in. (5.08 cm to 7.62 cm) or greater
Weight Of Cylinder	8 lb. (3.63 kg)
Discharge Size	1.25 in. (3.18 cm) NPT
Installation	Any angle from vertical to horizontal
Driver Weight	35 lb. (15.8 kg)
Driver Rod Weight	12 lbs. per 100 feet (3.7 kg per 100 m)
Foot Valve Assembly Weight	8 lb. (3.6 kg)
Min. Well Casing Size	2 in. (5.08 cm)
Pneumatic Air Connection	3/8 in NPT, 3/8 in. OD tubing

Available Options

- Drive-rod auto oiler
- Pressure-relief valve
- Programmable pneumatic timer
- Cylinder oiler & filter regulator
- Flow meter
- Pneumatic cylinder counter
- Well seals & kits
- Factory-fresh seal replacements
- Factory driver-refurbishment program

Visit www.blackhawkco.com to see why motors above the wellhead mean less-costly, more compliant, safer operations.

The best-performing environmental pump in the business

